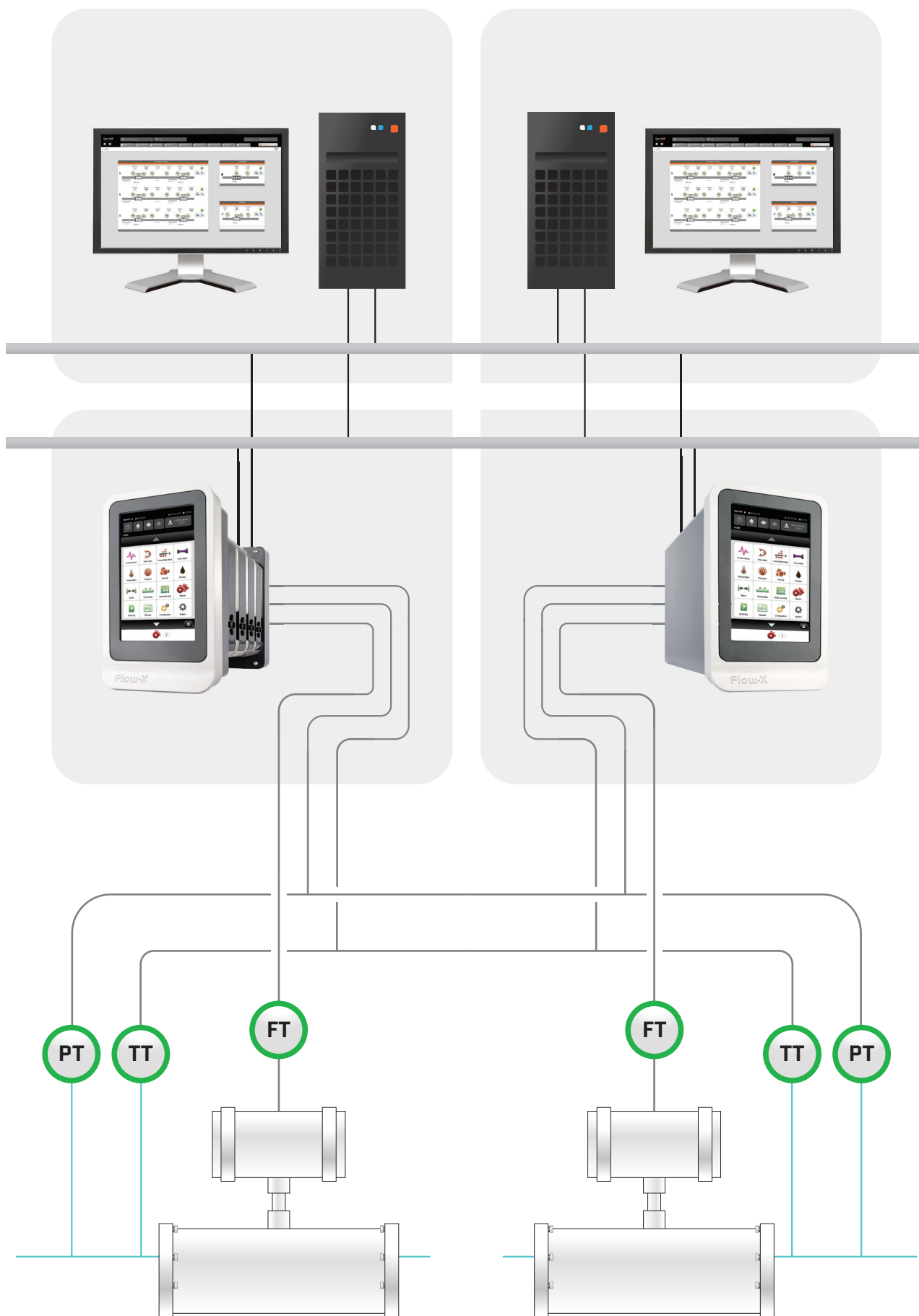


THE POWER PACKAGE

Flow-X + eXLerate

Delivering flow measurement automation solutions to the oil & gas industry





POWER PACKAGE - INTRODUCTION

A Power Package is a pre-engineered automation solution based on the seamless integration of the Flow-X and eXLerate platforms, which address the typical functions of a particular application such as Flow Metering Control and Crude Gathering.

- ✓ *Each Power Package comes fully loaded with application-specific, rich functionality and delivers the highest performance and best quality – an optimal Value Proposition for our users.*
- ✓ *Our packaged solutions are cost-effective. No duplicate configuration work or project-specific custom programming experiments, hence testing time is reduced and the trouble-shooting of issues is made easier. Since they are already implemented, tested and delivered, a repeatable and proven solution is achieved.*
- ✓ *Protect your investment. Spirit IT applies a continuous improvement program for all its products. We ensure full support and compatibility between our products and applications today and more importantly, in the future.*
- ✓ *Low risk. Our packaged solutions have multiple users and suppliers; you are not dependent on a single engineering partner. Customers are clear on cost, schedules and deliverables, which reduces uncertainty in project execution.*
- ✓ *Best in documentation, training and support. All Power Package components are 100% developed, tested and supported by Spirit IT. You are backed up by the Spirit IT development and technical support team.*

POWER PACKAGES

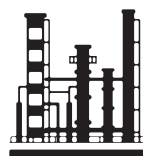
Spirit IT currently provides Power Packages for:

- ✓ *Flow Metering. Fully Complete, Custody Transfer metering control systems with comprehensive functionality including true redundancy, comprehensive HMI, reporting, diagnostics and CBM (Condition Based Monitoring), VFC (Virtual Flow Computers), integrated instrument validation, flow computer report archive, and much more.*
- ✓ *Crude Gathering. The eXSite™ Product Suite is especially developed for LACT applications. It includes control, driver verification, electronic run tickets, HMI, meter diagnostics, proving and more. The eXSite™ Product Suite includes an available corporate database server, with a web-based portal for centralized audit trail, diagnostics and ticket data repository.*
- ✓ *Calibration Management. Complete solutions for calibration laboratories providing accurate meter pulse measurement, elaborate calculations, meter calibration, operational control, data management, certificate generation and data repository and compliant with ISO17025.*

Additional Power Packages for other applications are currently under development.

Sophisticated flow measurement and control hardware, software, systems and solutions enable you to maintain a precise overview of your product(s) throughout the entire process chain, all the way from meter to invoice.

Designed to fulfill the metering needs of system integrators and end-users in the oil and gas industry, Spirit IT's Flow-X hardware and eXLerate software mesh perfectly to form the comprehensive flow measurement and supervision Power Package.



THE SPIRIT POWER PACKAGE

Spirit IT's Flow-X hardware platform and eXLerate software platform were designed to meet the exacting demands of the oil and gas industry with superb functionality and flexibility.

The integration of these two exceptional product platforms, with identical design philosophy, provides the best of both worlds, both power and consistency in automation layers. Together, this partnership provides the most comprehensive and consistent suite of flow measurement automation tools in the market today.

A Power Package is a pre-engineered combination of the two product platforms and delivers a complete automation solution that addresses the typical functions of a particular application, such as flow metering control, crude gathering or calibration management.

Each solution offers the highest degree of quality and consistency in measurement data during transfer from the meter to the accounting system.

Packaged solutions provide lower cost, risk and time. They provide flexibility and work well in many different environments.

A Power Package provides all typical functions and is fully tested, therefore saving many engineering hours that would otherwise be needed for custom programming and extensive software testing.

Packaged solutions create predictable, clearly-defined outcomes and offer a straightforward approach to achieve faster results with less risk and greater consistency.

THE POWER PACKAGE FOR FLOW METERING CONTROL

Traditionally, metering control systems are fully custom-made systems providing only the functions listed in the project specification - no more, no less. The Spirit IT Flow Metering Control Power Package is a standard solution providing not only the basic metering control functions (flow computation, data communication, HMI, reporting and control) but also many advanced features, including:

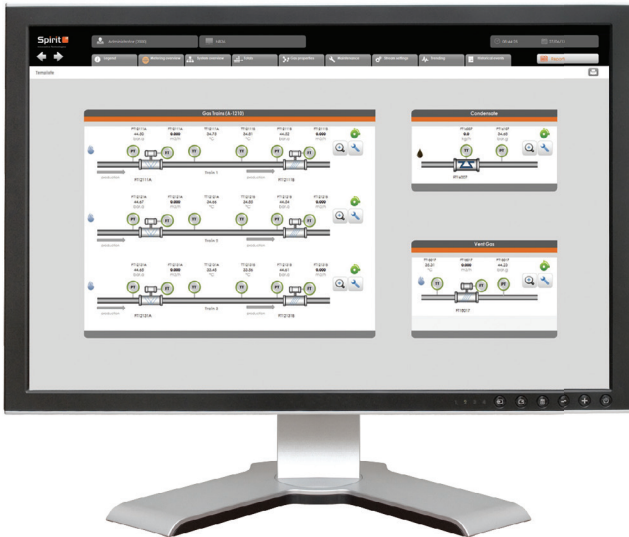
- ✓ On-line flow meter diagnostics
- ✓ Searchable measurement data repository
- ✓ Searchable comprehensive audit trail
- ✓ Flow computer report archive
- ✓ Flow computer configuration management
- ✓ Electronic log books

Optional features can also be included that will turn your metering control system into a smart and highly sophisticated measurement data management system, such as:

- ✓ Virtual flow computers as a second opinion and a back-up for the Flow-X flow computers.
- ✓ Mismeasurement management for the automatic detection, quantification and correction of measurement errors.
- ✓ Validation and calibration control and management.
- ✓ Online overall measurement uncertainty calculator.
- ✓ ... and of course, all flexibility & expandability of the Spirit product platforms.

The Metering Control Power Package gives you **full control** of your measurement data.

eXLerate



eXLerate is Spirit IT's automation software platform. It was developed specifically for the oil and gas industry and is ideal for the control and management of flow metering, crude gathering and flow calibration systems.

System integrators and end-users share a need for accurate, secure and cost-effective automation solutions. eXLerate offers a comprehensive set of tools for the implementation of Human Machine Interface (HMI), supervisory control and measurement data management solutions. In the critical environment of custody transfer of oil and gas assets, redundancy is an essential feature. eXLerate offers fully synchronized and integrated redundancy, guaranteeing a consistent environment.

Key features

- ✓ Accurate and flexible communication with measurement equipment
- ✓ Searchable measurement and audit historical data
- ✓ Sophisticated and flexible oil and gas production reports
- ✓ Extensive set of flow and fluid property calculations
- ✓ Embedded Virtual Flow Computing (VFC) functionality
- ✓ Integrated instrument Validation & Calibration functionality
- ✓ Integral part of the familiar MS Office™ environment

A single, stand-alone eXLerate platform is often sufficient to create a reliable HMI solution with ample functionality, in more complex situations, its scalable architecture supports multiple servers and clients.



Field-proven: eXLerate has a large installed base in oil and gas measurement



Synchronization of all actual and historical data between servers and clients



Excellent technical support from Spirit IT engineers who have extensive experience and expertise in many end-user applications.

Flow-X



Spirit IT challenges traditional flow-measurement technologies with a unique concept. The modular Flow-X series offers advanced measurement technology together with powerful and flexible computation and communication capabilities.

The Flow-X series is designed to compute and control liquid and gas flows to the highest measurement standards. The series is based on powerful single-stream modules, which can be combined in racks of up to eight. Each module offers real-time digital and analog signal processing, supporting the custody transfer of crude oil, natural gas, refined products, special gases and steam, among others.

Key features

- ✓ Highest degree of measurement and computational accuracy
- ✓ Complete gas and liquid applications in both metric and US units
- ✓ Certified in compliance with major international standards
- ✓ Multiple enclosure options, ranging from cost-effective to full-fledged
- ✓ Wide range of inputs, outputs and communication interfaces
- ✓ Large color touch-screen interface and on-board storage (1 GB per module)
- ✓ Highly secure embedded web server
- ✓ Unique emulation capabilities for seamless and cost-effective integration
- ✓ Personal user names and passwords for true traceability
- ✓ Unsurpassed software capabilities, flexibility, security and transparency

The next-generation Flow-X hardware platform delivers top-of-the-range quality in a highly compact design.



Two-fold interface: User-friendly touch-screen and remote Ethernet web connection.



Web server interface with identical (multi-lingual) functionality.



Includes the powerful Flow-Xpress configuration software, for easy configuration of vital parameters and custom features, and diagnosis of measurement data and computations.

ABOUT SPIRIT IT

We make flow measuring systems **better, smarter and more accurate.**



A MEMBER OF THE ABB GROUP



Power and productivity
for a better world™

Since November 2014, Spirit IT has become a member of the ABB Group. The acquisition adds a new line of high-performance custody transfer solutions to ABB's measurement business unit.

ABB is a leader in power and automation technologies that improve performance while lowering environmental impact. With thousands of experts around the world and high-performance innovations, ABB's team is dedicated to making measurement easy for its customers.

WEB

www.SpiritIT.com

MAIL

sales@SpiritIT.com

EINDHOVEN

The Netherlands

*Prof Dr Dorgelolaan 20
5613 AM Eindhoven
The Netherlands*

*PO Box 2019
5600 CA Eindhoven
The Netherlands*

T +31 40 23 69 445

HOUSTON

United States of
America

*201 Kingwood
Medical Drive
Suite A200
Kingwood TX 77339
United States of
America*

T +12 81 97 31 740

KUALA LUMPUR

Asia Pacific/Malaysia

*Vista Tower, Suite 13D
Level 13
348 Jalan Tun Razak
50400 Kuala Lumpur
Malaysia*

T +60 3 2166 5266