



## TECHNICAL LIBRARY

AS A SERVICE TO THE  
HYDROCARBON MEASUREMENT  
INDUSTRY, CRT-SERVICES  
CURATES THIS COLLECTION OF  
DIGITAL RESOURCES.

# $\mu$ FLO<sup>G4</sup> (microFLO<sup>G4</sup>) G4 products flow computer

The  $\mu$ FLO has become one of the most popular single run gas flow computers in North America.



ABB introduced the  $\mu$ FLO (microFLO) in 2002. Since that time, the  $\mu$ FLO has become one of the most popular single run gas flow computers in North America. The  $\mu$ FLO<sup>G4</sup> (microFLO<sup>G4</sup>) is a direct replacement for the time proven  $\mu$ FLO with additional features and upgrades. The  $\mu$ FLO<sup>G4</sup> is an extremely accurate, reliable flow computer with the capability to measure and monitor gas flow in compliance with AGA, API and ISO standards. These units are also expandable to provide additional communications and IO options. Backward compatibility is always of concern and this unit provides that as well. The internal sensors and electronics are direct replacements for existing  $\mu$ FLOs. With low power, accuracy and system integrity built in, these devices are proven daily on thousands of sites. Totalflow products provide users the best opportunity for successful projects – site by site or system by system.

## Description

The  $\mu$ FLO<sup>G4</sup> includes an Integrated high accuracy digital Multi-Variable sensor (IMV) to measure both pressures and temperature. Two (2) versions of the sensor are available: one with differential pressure, static pressure and temperature for DP measurement applications, and one with static pressure and temperature for Linear measurement applications. The IMV is housed inside the flow computer enclosure and is characterized and calibrated at Totalflow's factory. Multi-tube capability is available in each

unit and is easily invoked with a few configuration changes and interface connection to external transducers, either digital or analog.

The  $\mu$ FLO<sup>G4</sup> features a powerful 203Mhz ARM920T 32 bit microprocessor and Windows CE operating system. The  $\mu$ FLO<sup>G4</sup> utilizes a unique "engine card" design. The engine card contains the processor, application firmware and memory components. This allows the user to move the engine card with all programming intact from one device to another if necessary. The processing and memory capability of this device, allows the user to run more applications faster than ever before. Up to eight (8) differential measurement applications per RS-485 communications port when utilizing MODBUS multivariable sensors (plus 1 tube type application utilizing the integrated sensor) are possible. The number of linear meter applications is limited by the available I/O and device configuration. Additional "tube" or measurement applications are easily enabled with simple user or factory configuration.

In addition to the basic flow computer inputs (DP, SP and temperature), the standard device includes: one (1) digital output and one (1) digital inputs which can be configured as either a status input or pulse accumulator input (up to 20 kHz).

A Communications + IO expansion board can be added to extend the hardware IO and communications capability.

# μFLO<sup>G4</sup> (microFLO<sup>G4</sup>)

## G4 products flow computer

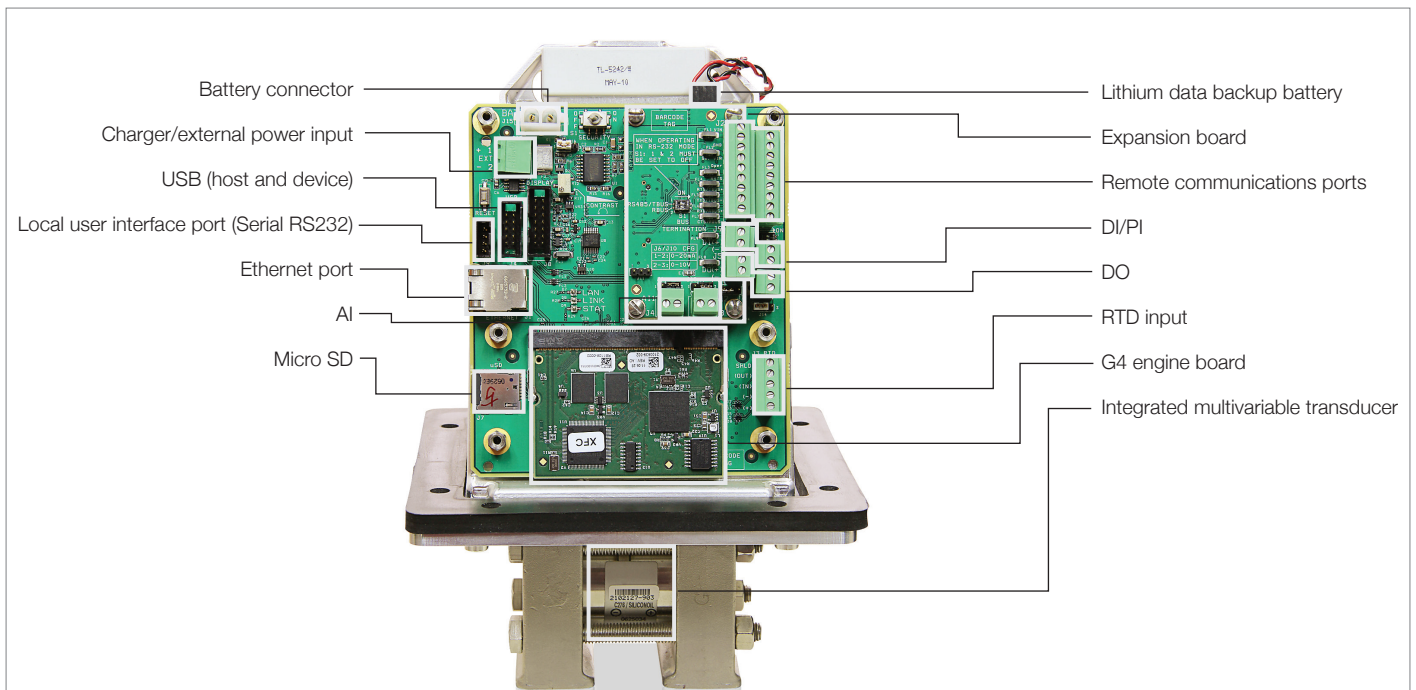


Fig. 3: IMV<sup>G4</sup>

### Description continued...

Each unit is powered by an internal battery that can be solar charged (or other suitable DC supply) for remote unattended operation. Several charging options are available. The unit can also operate on an external power supply of 9 Vdc - 30 Vdc. When operating on external power supply, all IO and VBatt connections will operate at the supply power voltage.

Communications interface cables and equipment can be installed at the factory, ready for quick field installation.

Checking and modifying configuration and calibration is accomplished with ABB's PCCU32 laptop software running on a 32-bit Windows operating system. In addition to the local configuration port, one communications port is supplied with the standard unit. This port is user selectable for RS232/RS422 or RS485. An additional port may be added with the optional Com + IO expansion board. Available protocols include Totalflow native low power, Modbus RTU or ASCII, LevelMaster, as well as several others.

One integrated 10Base-T Ethernet port for network connectivity is standard and a USB port for Flash download and local configuration is available as an option.

### Hardware modularity

Hardware functionality of μFLO<sup>G4</sup> devices can be extended by adding an optional expansion board.

Communications + IO expansion board includes:

- One (1) communications port.  
User selectable for RS232/RS422 or RS485
- One (1) DO
- One (1) DI/PI (supports up to 20 kHz)
- Two (2) Analog Inputs (4-20 mA or 1-5 Vdc)

### Software modularity

The software design represents significant modularization through use of object oriented design principles. This allows a flexible and stable real time environment. Totalflow supplied objects (applications) can be enabled in our factory or by the user, one or more times on the same device. It is this framework that allows the support for multi-tube measurement.

Supported Software applications continually grow. A sample of standard applications include:

- AGA3 orifice meter run
- ISO 5167 orifice meter run
- VCone meter run
- AGA7 meter run (rotary/turbine/ultrasonic)
- Coriolis Gas Application
- Liquid measurement (Linear) **future**
- Real-time Data logger (trending)
- RAMS (Alarming, Exception Reporting)
- Operators (simple custom math / logic)
- Selectable Units (user selectable engineering units)
- Tank Level Application
- Therms master application
- Therms slave application
- NGC Client
- XMV Interface (for Multiple DP meter runs)
- Multiple protocols (Totalflow native low power, Modbus slave (binary/ASCII), Modbus master (binary/ASCII), Enron Modbus, LevelMaster, ABB 267CS/269CS XMV Multivariable)

## μFLO<sup>G4</sup> Flow Computer features

- Low cost, high reliability design
- 203Mhz ARM920T 32 bit microprocessor
- Windows CE operating system (allows for a single software development environment for all G4 products)
- Integrated Ethernet 10Base-T port (full networking capabilities)
- USB host and USB device ports (ver 1.1): used for flashing new firmware and may be used as a fullspeed (12Mbs) local configuration and collection port
- μSD Card capability (future non-volatile memory expansion)
- Significant hardening against over-current / transients
- Positive Temperature Coefficient, resetting fuses and transient protection on
- VBatt and SWVBatt Outputs
- Digital Outputs
- Battery Charger Input
- Base IO on μFLO<sup>G4</sup> main electronics board
- One (1) Digital Input (may be used as hi-speed PI input)
- One (1) Digital Output
- Battery Voltage
- Charger Voltage
- Low power design
- Aluminum powder coated enclosure (3R)
- Flexible accommodation of communications hardware
- Cost effective communications kits
- Stable time base (accurate integration)
- User selectable simple dual level security code data protection or enhanced user configurable Role Based Access Control (RBAC)
- Rechargeable, lead acid batteries with Solar, AC or DC charging options. Can also operate on 9 Vdc to 30 Vdc external power supply (without battery option only). User can enter date when batteries are installed and expected battery life. μFLO<sup>G4</sup> will warn when expected life is reached. Can be used as an asset management tool. (Figure 2 above)

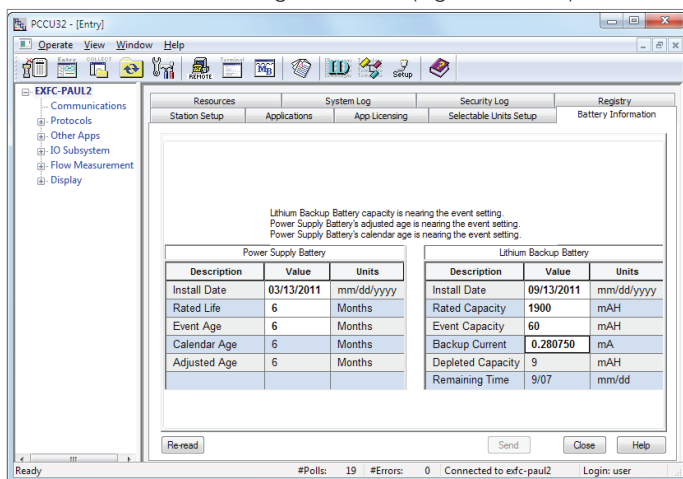


Fig. 2: Software/asset management tool.

## Custody transfer applications

- Monitors user limits for detection, and reporting of abnormal conditions
- Defaults to 40 Days of hourly and 50 Days of daily data. User configurable.
- Defaults to 200 Events. User configurable.
- Complies with latest version of API 21.1 standard for custody measurement devices
- Flow and energy calculations per AGA3-85, AGA3-92, AGA-7, AGA-5, and ISO 5167
- Meets Flow Computer requirements as stated in AGA Report No. 9, "Measurement of Gas by Multi-path Ultrasonic Meters"
- Super compressibility calculations per NX-19, AGA8-92 Gross or Detail, ISO 12213
- Smart (temperature and pressure compensated) integral, factory calibrated, multivariable transducer (IMV)
- All calculations performed once per second
- Standard "High Speed Chart" graphics for each run showing DP/Counts, Static Pressure, Temperature, and Flow rate. Frequency of sampled data is user configurable. Example chart in photo on page 5.
- Flow retention during user transducer calibration
- Selectable 3 or 5 point user calibration of Analog Inputs
- User definable DP no flow cut-off
- 100 ohm platinum RTD resistance curve fit with user programmable single point offset or 3/5 point user calibration for RTD input
- Hazardous Area Certification: CSA C/US; ATEX and IECEx
- Real time clock that continues running on lithium battery (maintains data backup)
- Advanced embedded data logger (Trending)
- Programmable alarm filtering
- Exception reporting capability
- Multiple protocol options including Totalflow packet protocol, various Modbus protocols and others
- User programmable Modbus register maps (both slave and master)
- User programmable math and logic sequences
- Multi-run measurement capability. One run measurement utilizing IMV, up to eight (8) additional runs per com port using MODBUS mult-variables.
- Sensor with housing and main electronics board are individually field replaceable. No longer necessary to replace the entire IMV in the event of a failure. All factory sensor calibration data is retained in a small electronics board that is part of the sensor and housing.

# μFLO<sup>G4</sup> (microFLO<sup>G4</sup>)

## G4 products flow computer

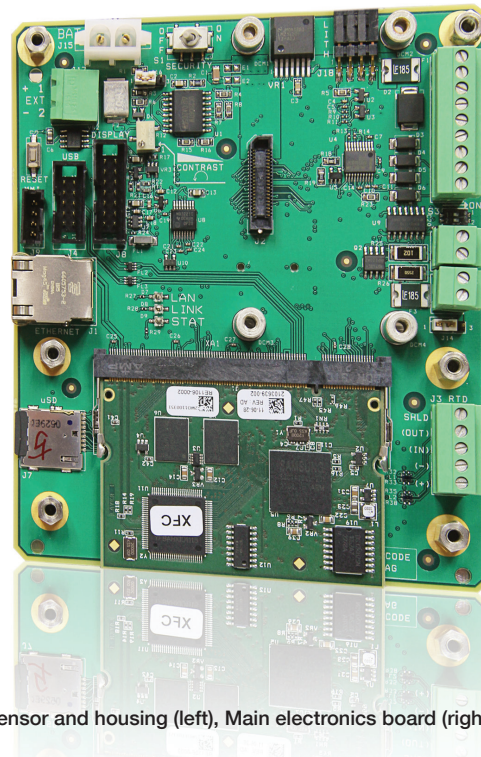
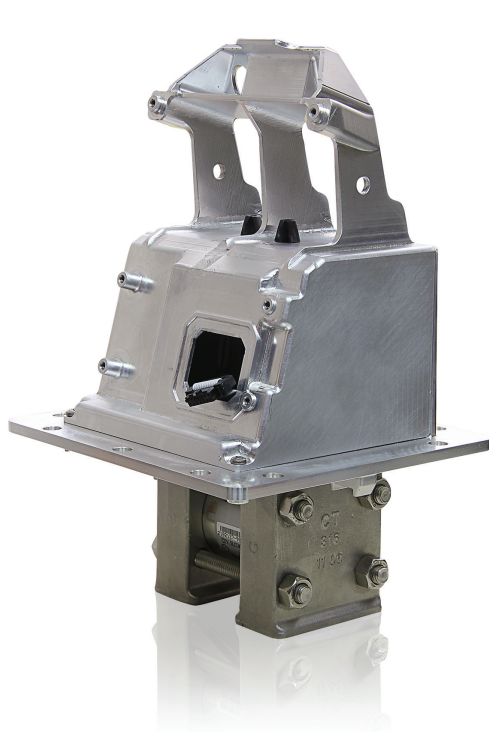


Fig. 4: Sensor and housing (left), Main electronics board (right)

### General Specifications μFLO<sup>G4</sup> 6213

<b>Dimensions</b>	(Width) 12.76 in. (324.00 mm) (Height) 17.81 in. (452.40 mm)	<b>Electromagnetic Compatibility Requirements (EMC)</b>	<b>Emissions:</b> European Regions per EN 61000-6-3: 2006, Residential locations: – Radiated Emissions: 30-1000MHz, 1-6GHz, Class B Limits – Conducted Emissions (Telecomm Port): 0.15-30MHz, Class B Limits North America & other regions: – CFR 47, Part 15, Subpart B, Class B, FCC Emissions – ICES-003 Issue 4 CAN/CSA-CEI/IEC CISPR 22:02, Class B ITE Emissions – AS/NZS CISPR 22-2009 (Australia/New Zealand) <b>Immunity levels:</b> per EN 61000-6-2: 2005, industrial locations – EN61000-4-2: Electrostatic Discharge, Criterion A1, 8kV Air, 4kV Contact – EN61000-4-3: Radiated Immunity, Criterion A1, 80MHz-2.7GHz 10V/m – EN61000-4-4: Fast Transients, Criterion A1, 1kV DC & Signal – EN61000-4-6: Conducted Immunity, Criterion B2, 0.15-80MHz 10Vrms – EN61000-4-8: Magnetic Fields, Criterion A1, 10A/m 50/60Hz Note 1: No degradation of performance or loss of function. Note 2: Temporary degradation of performance in which signals deviate during disturbance but self-recover when disturbance is removed.
<b>Installed depth</b>	(Pipe Mount) 11.58 in. (294.23 mm) (Wall Mount) 11.02 in. (279.88 mm)		
<b>Weight (w/o battery)</b>	Approx 15.1 lbs. (5.64 kg)		
<b>Max battery</b>	Capacity 26AH		
<b>Enclosure</b>	Powder coated aluminum; Type 3R		
<b>Certification (hazardous location classification)</b>	– CSA C/US Class 1, Division 2, Groups C & D T3 -40°F (40°C) to +140°F (+60°C), (-40°F (40°C) to +185°F (+85°C) temperature rating without battery or radios) – ATEX Zone 2, Sira 10ATEX4138X, II 3G Ex nA IIB T3 Ta = -40°C to +60°C (meets European Union Directive 94/9/EC) pending (expected in April 2012) – IECEx CSA09.0013X, Ex nA IIB T3 (-40°C ≤ Tamb ≤ +60°C) pending - Feb 2012		
<b>Mounting</b>	Wall, pipe, or direct		
<b>Operating temperature (ambient)</b>	-40 to 185°F (-40 to +85 °C) Note: see Certification (Hazardous Location Classification) above		
<b>Humidity</b>	0 - 95% non-condensing		



## General Specifications $\mu$ FLO<sup>64</sup> 6213 continued...

<b>Power</b>	Nominal 12 Vdc battery (J15) with J16 jumper on pins 1 & 2. Will operate with 9 - 30 Vdc external power supply on J17, no connection on J15 (no battery allowed in this configuration), and J16 jumper must be on pins 2 & 3	<b>Digital inputs/ Pulse inputs</b> One (1) standard on main board. One (1) additional on optional expansion board	Input is configurable as active or passive with optional software de-bounce. <ul style="list-style-type: none"> <li>Open circuit voltage: 5 Vdc (Internally pulled up to 5 Vdc nominal)</li> <li>Short circuit leakage current: - 395 <math>\mu</math>A typical</li> <li>Input capacitance: 0.1 <math>\mu</math>F typical</li> <li>Maximum allowable voltage range on input: - 0.5 Vdc to 30 Vdc</li> <li>Maximum frequency input 100 Hz @ 50% duty cycle with de-bounce enabled</li> <li>Maximum frequency input 10 KHz @ 50% duty cycle with de-bounce disabled</li> <li>Dry Contact (Form A), Open Collector or Active Voltage</li> <li>Minimum contact resistance to activate input: 1000</li> <li>Voltage threshold to deactivate the input: 3.1 V (referenced to GND terminal)</li> <li>Voltage threshold to activate the input: 0.5 V (referenced to GND terminal)</li> <li>Conductor pairs must be shielded to prevent spurious signals</li> </ul>
<b>Charger</b>	Solar or 15 VDC, 30 Watt Maximum (connected to J17. J16 jumper must be on pins 1 & 2)		
<b>Current draw</b>	<ul style="list-style-type: none"> <li>Basic single differential measurement application without communications enabled: ~31mA @ 13.8 V (~428mW)</li> <li>Basic single differential measurement application with ethernet enabled: ~52mA @ 13.8 V (718mW)</li> <li>Sleep mode: 17mA @ 13.8 V (235mW)</li> </ul>		
<b>Memory</b>	<ul style="list-style-type: none"> <li>Windows CE Operating System, Application programs, and Configuration Files stored in 64 Megabyte Flash memory</li> <li>Program execution and data stored in 32 Megabyte Pseudo Static RAM. (lithium battery backup)</li> <li><math>\mu</math>SD (future applications)</li> </ul>		
<b>LCD interface</b>	Dedicated interface for 2 X 24 Liquid Crystal Display (LCD)		
<b>Security switch</b>	On/Off dual-level on-board security switch; also supports enhanced Role Based Access Control (user configurable, multilevel, multi-user security)		
<b>Time base stability</b>	$\pm 7.5$ ppm (parts per million)		
<b>IO scan rate</b>	1 Time per Second (1 Hz)	<b>Digital outputs</b> One (1) standard on main board. One (1) additional on optional expansion board	<b>Open drain FET (non-isolated)</b> <ul style="list-style-type: none"> <li>Open circuit voltage: 0 Vdc</li> <li>Short circuit leakage current: 0 <math>\mu</math>A typical</li> <li>Output capacitance: 1000 PF typical</li> <li>Maximum allowable voltage range on output: 0 Vdc to 30 Vdc</li> <li>Open drain FET type</li> <li>"ON" resistance: 0.22 <math>\Omega</math> typical (including PTC fuse resistance)</li> <li>Maximum pulse current: 3 A for 5 seconds</li> <li>Maximum continuous sink current: 1.85 A @ 23°C; 1A @ 70°C; 0.85A @ 85°C</li> </ul>
<b>AGA3/AGA7/ISO5167/VConc calculations</b>	Calculations are tested and verified to be within $\pm 50$ ppm (parts per million) as stated in API 14.3.4		
<b>Communications ports</b> (One (1) additional RS232/RS422/RS485 user selectable port with optional expansion board)	<ul style="list-style-type: none"> <li>1 - dedicated - PCCU (Local Configuration Port)</li> <li>1 - RS232/RS422/RS485 user software selectable (baud rates up to 115,200)</li> <li>1 - USB 1.1 Host port - optional</li> <li>1 - USB 1.1 Device port (may be used as high-speed local configuration port) - optional</li> <li>1 - 10 Base-T Ethernet port (may be used as high speed local port or network port)</li> </ul>		
<b>IO expansion board</b>	Optional: <ul style="list-style-type: none"> <li>1 RS232/RS422/RS485 com port</li> <li>1 DI/PI</li> <li>1 DO</li> <li>2 AI</li> </ul>		
		<b>Analog inputs</b> (optional) Two (2) on the Com + IO Expansion Board	<b>Voltage Mode: (each point)</b> <ul style="list-style-type: none"> <li>Input Impedance <math>\geq 400\text{K}\Omega</math>; Drift = <math>\pm 0.0053\%/^{\circ}\text{C}</math></li> <li>Maximum Measurable Input Voltage = 20V</li> <li>Resolution = 0.615mV/Bit (12.99 Bits from 0-5V)</li> </ul> <b>Current Mode: (each point)</b> <ul style="list-style-type: none"> <li>Input Impedance 255<math>\Omega</math>; Drift = <math>\pm 0.008\%/^{\circ}\text{C}</math></li> <li>Maximum Measureable Input Current = 44 ma (limited by power dissipation)</li> <li>Resolution = 2.4<math>\mu</math>A/Bit (12.7 Bits from 4 - 20 mA)</li> </ul>

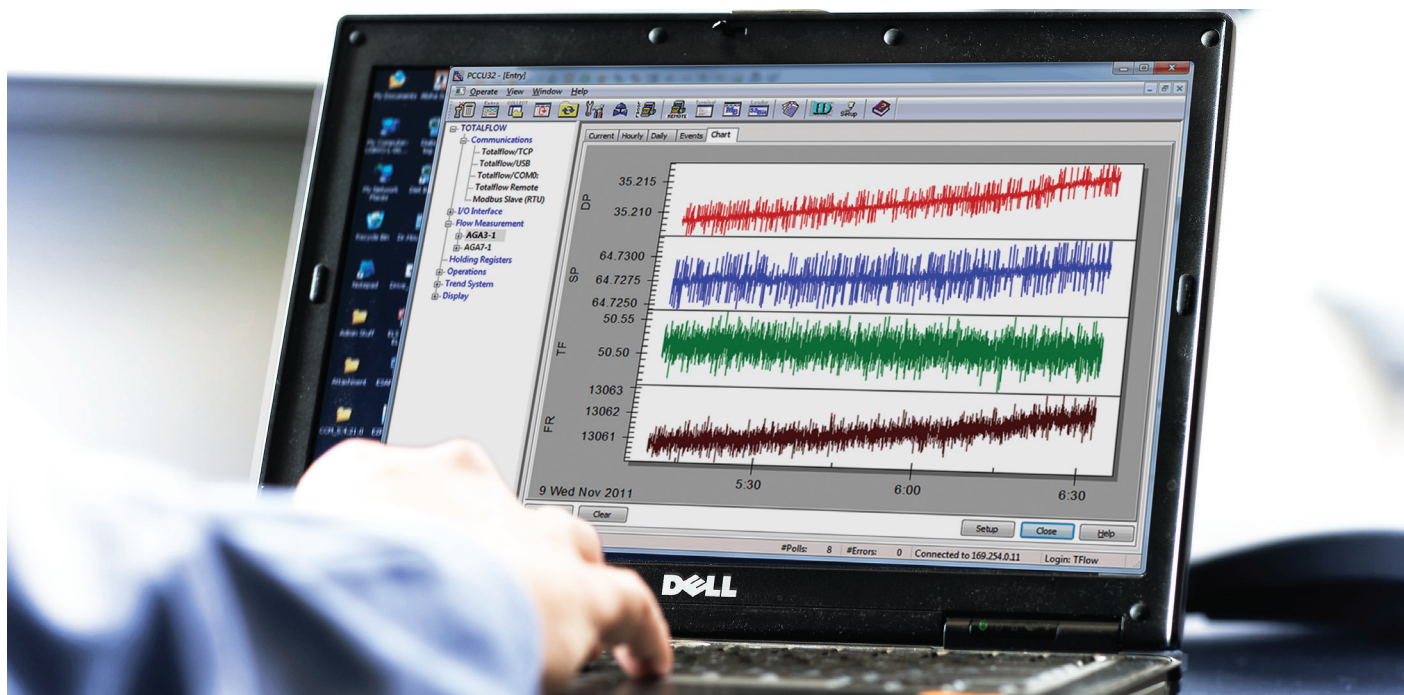
# μFLO<sup>G4</sup> (microFLO<sup>G4</sup>)

## G4 products flow computer

Integral Multivariable (IMV <sup>G4</sup> ) Specifications	
Multivariable unit	
Temperature limits	<b>Compensated</b> -40 to 160°F (-40 to 71.1°C) <b>Operational</b> <sup>1</sup> -40 to 185°F (-40 to 85°C) <b>Storage</b> -40 to 185°F (-40 to 85°C)
Resolution	24 Bit maximum resolution (0.000012% FS) (0.0012% FS effective signal resolution)
Vibration performance	1.5 INW per G (2G maximum) at 1 Hz, decreasing to zero at 1KHz in straight line mode
Mounting specification	Change from perpendicular (front to back / around X-axis) ≤ 0.5% of URL (Can be corrected with calibration)
Reference conditions	Temperature at most recent factory or user calibration; Static Pressure and Differential Pressure < 100% of URL
Static pressure	
Accuracy (including linearity, hysteresis, & repeatability at reference conditions)	± 0.075% of user calibrated spans from 20% to 100% of URL
Ambient temperature effect within the Operational Temperature Limit	± 0.075% of URL ± 0.06% of Reading
Stability (for 12 months)	± 0.1% of URL when operated in the compensated thermal band and ≤ 100% of the stated static and differential pressure ranges
Differential Pressure (μFLO <sup>G4</sup> Differential version only)	
Accuracy (including linearity, hysteresis and repeatability at reference conditions)	± 0.075% of user calibrated spans from 20% to 100% of URL
Ambient temperature effect within the Operational Temperature Limit	± 0.075% of URL ± 0.06% of Reading
Stability (for 12 months)	± 0.1% of URL when operated in the compensated thermal band and ≤ 100% of the stated static and differential pressure ranges
Static pressure effect (DP Zero)	+ 0.03% of URL per 1500 PSI (3200 PSI maximum)
Static pressure effect (DP Span)	+ 0.1% of reading per 1500 PSI (3200 PSI maximum)
Temperature	
Process range	-80 to +750°F (-62 to 399°C)
Accuracy (as shipped from factory)	± 0.35°F (± 0.2°C) over operating range
Accuracy (after single point field calibration)	± 0.2°F (± 0.12°C) repeatability over operating range

Available Ranges μFLO <sup>G4</sup> (Differential IMV)					
	DP (inches H2O)				
AP (psia)		250	500	1500	3200
	250	(Proposed addition)	✓	✓	future
	800		✓	✓	future
Available Ranges uFLO <sup>G4</sup> (Linear IMV)					
AP (psia)	100	500	1500	3000	
Integrated Multivariable (IMV <sup>G4</sup> ) Sensors					
Single Seal Rated (ANSI/ISA 12.27.01)		– DP/SP sensor: PMax = 3000 psi – Wetted materials meet NACE MR0175/ISO 15156 – Process Fluids: - 62°C to 110°C			

<sup>1</sup> See "Certification (Hazardous location classification)" on page 5 for additional information concerning operational temperature limits based on certifications.





# Contact us

## **ABB Inc.**

### **Totalflow Products**

#### **Main Office**

7051 Industrial Boulevard  
Bartlesville, OK 74006

Phone: +1 918 338 4888

+1 800 341 3009

Fax: +1 918 338 4699

## **ABB Inc.**

### **Totalflow Products**

3700 W Sam Houston Parkway  
South, Ste. 600

Houston, TX 77042

Phone: +1 713 587 8000

Fax: +1 713 266 4335

3900 S. County Rd. 1290  
Odessa, TX 79765

Phone: +1 432 563 5144

Fax: +1 432 563 8043

## **ABB Inc.**

### **Totalflow Products**

2 Acee Dr.

Natrona Heights, PA 15065

Phone: +1 724 295 6100

Fax: +1 724 295 6560

## **ABB Inc.**

### **Totalflow Products**

4300 Stine Rd.

Ste. 405-407

Bakersfield, CA 93313

Phone: +1 661 833 2030

Fax: +1 661 833 2034

[www.abb.com/totalflow](http://www.abb.com/totalflow)

#### **Note**

We reserve the right to make technical changes or modify the contents of this document without prior notice. With regard to purchase orders, the agreed particulars shall prevail. ABB does not accept any responsibility whatsoever for potential errors or possible lack of information in this document.

We reserve all rights in this document and in the subject matter and illustrations contained therein. Any reproduction, disclosure to third parties or utilization of its contents - in whole or in parts - is forbidden without prior written consent of ABB.

Copyright© 2011 ABB

All rights reserved

Document #2104499-AA\_020712

Power and productivity  
for a better world™

