



ABB MEASUREMENT & ANALYTICS | How To

FlowX & Flow-Xpress



Upgrading FlowX modules to Flow-Xpress version 2

Measurement made easy

Task

Upgrading using Flow-Xpress version 2 with existing modules. Some comport settings will revert back to default settings.

For more information

Contact Support
totalflowsupport@us.abb.com or
Phone 800-442-3097 (US)

Warning

- Please read all instructions and notes before attempting to complete this task.
- The FlowX module **WILL RESTART** after upgrading. Any processes that FlowX is controlling or is providing data for should be shutdown to prevent issues.
- Some parameters may revert back to factory default settings

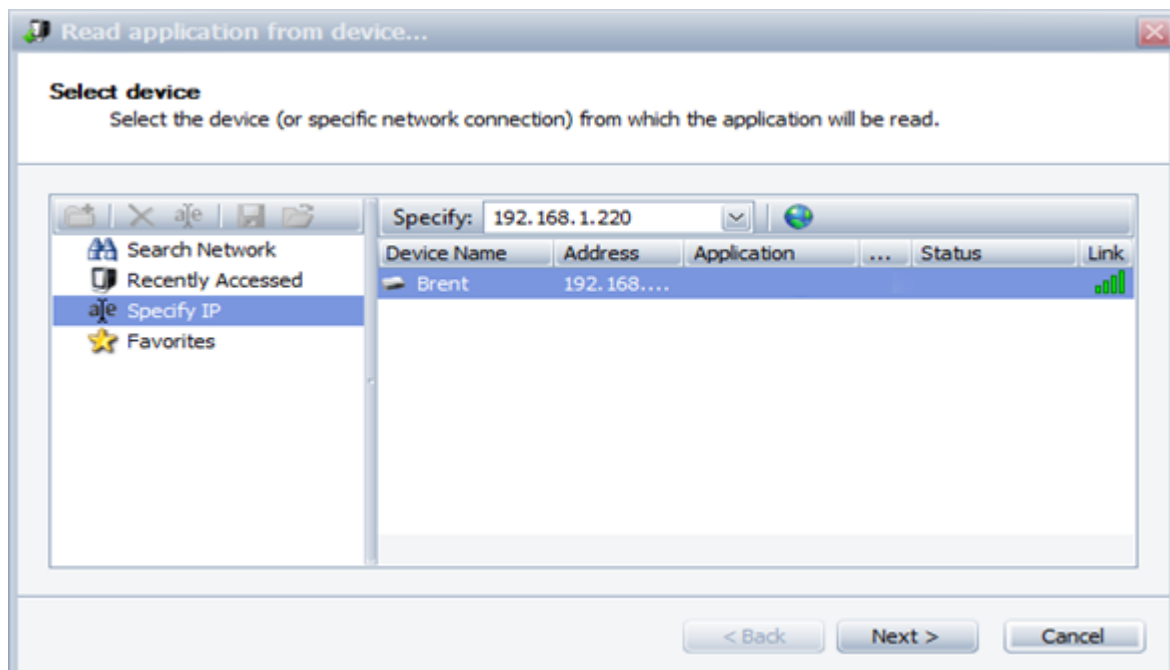
Step 1 Reading the application

Using Flow-Xpress in either the Basic or Professional modes, Select the “Read from Device” Icon.



The Read application from device menu allows the user to Search the Network, see Recently Accessed module, Specify IP address or select Favorites from a predefined list.

- Select the method and click on the module to highlight it.
- Click on the Next button and Flow-Xpress will start retrieving the application.



- Click on the Continue button to load the application into Flow-Xpress

If Flow-Xpress warns of compilation errors related to API calculations, please refer to the ABB FlowX Job Aid – API Compile Errors to correct. If other output errors are present they must be corrected before the application can be written back to the module

Step 2 Writing the application

Note: Before writing any application to an existing module it is a good idea to save a copy of the Application, Parameters and Security file before proceeding. The FlowX module **WILL RESTART** after upgrading. Any processes that FlowX is controlling or is providing data for should be shutdown to prevent issues.

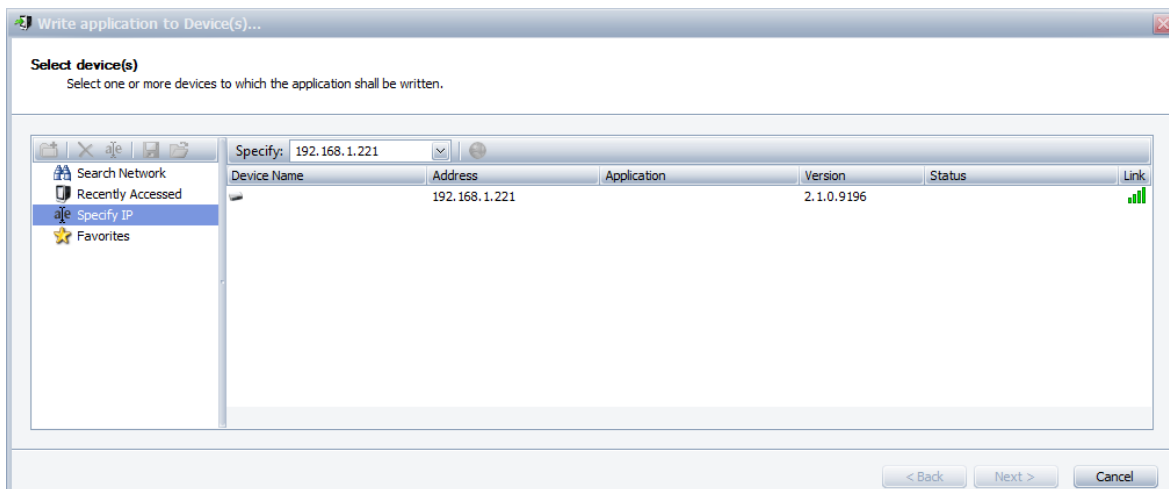
- Select the Write to Module Icon to start the uploading process to the module

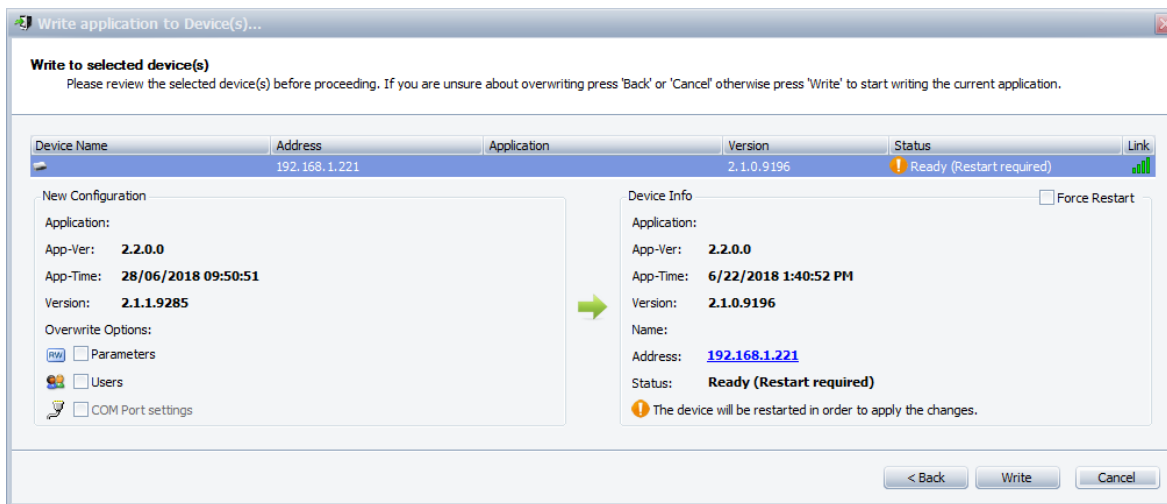


Write to
Device(s)

The Read application from device menu allows the user to Search the Network, see Recently Accessed module, Specify IP address or select Favorites from a predefined list.

- Select the method and click on the module to highlight it.
- Click on the Next button and a second menu will display.





Note: The “COM Port Settings” selection is greyed out and no longer used. All serial comports settings are now either configured in Ports & Devices in Flow-Xpress and in the Comm Porting settings via the web browser interface.

- There should be no need to select Parameters and Users unless the user has selected another application or Parameters file to use.
- Select Write and enter the appropriate Username and Password.

Flow-Xpress will now upload the application to the module and reboot when completed.

Step 3 Checking the com port settings

Note: The comm port settings may revert back to factory default after upgrading the module to Flow-Xpress V2. It is recommended to view each port setting using the web browser interface for reference later.

- Open a web browser and connect to the FlowX.
- Log into the FlowX and Select the “System” icon.



System

- If using a Standalone configuration, select the COM Ports icon.



COM Ports

- If using an X/R or X/P configuration, select the Modules icon and then select each module in the configuration individually to check their settings



Modules

Baud rate	9600	Parity	None	Data bits	8
Stop bits	1	UART mode RS-232			

If there are any issue or questions, please Contact ABB FlowX Support at totalflowsupport@us.abb.com or Phone 800-442-3097 (US)



ABB Inc.

Measurement & Analytics

Quotes: totalflow.inquiry@us.abb.com
Orders: totalflow.order@us.abb.com
Training: totalflow.training@us.abb.com
Support: totalflowsupport@us.abb.com
+1 800 442 3097 (opt. 2)

Oklahoma Office

7051 Industrial Boulevard
Bartlesville, OK 74006
Ph: +1 918 338 4888

California Office

4300 Stine Road
Suite 405-407
Bakersfield, CA 93313
Ph: +1 661 833 2030

www.abb.com/upstream

Kansas Office

2705 Centennial Boulevard
Liberal, KS 67901
Ph: +1 620 626 4350

Texas Office – Odessa

8007 East Business 20
Odessa, TX 79765
Ph: +1 432 272 1173

Texas Office – Houston

3700 West Sam Houston
Parkway South, Suite 600
Houston, TX 77042
Ph: +1 713 587 8000

Texas Office – Pleasanton

150 Eagle Ford Road
Pleasanton, TX 78064
Ph: +1 830 569 8062



We reserve the right to make technical changes or modify the contents of this document without prior notice. With regard to purchase orders, the agreed particulars shall prevail. ABB does not accept any responsibility whatsoever for potential errors or possible lack of information in this document.

We reserve all rights in this document and in the subject matter and illustrations contained therein. Any reproduction, disclosure to third parties or utilization of its contents – in whole or in parts – is forbidden without prior written consent of ABB.